

## WATERPROOF BALCONY

with deep penetrating action for joints and capillary cracks

### 'epasan FP-Dichter Balkon'

The protective factor for slabstone pavings on terraces and balconies.

### KEEPING THE VALUE

- Seals non watertight joints, prevents/stops cracking and efflorescences on outdoor slabstone pavings.
- For tiles, terrazzo, marble, cotto, Solnhofen tiles, klinker, façade klinker, granite, concrete, articles made out of concrete, sandstones, natural and artificial stones etc.

### PREVENT DAMAGES

For sealing and maintaining tiles, terrazzo, marble, cotto, Solnhofen tiles, granite (no imitates!), klinker, façade klinker, concrete, articles made out of concrete, sandstones; natural and artificial stones etc. 'epasan FP-Dichter Balkon' stands out for the following features:

- excellent sealing features
- transparent sealant
- a non-adhesive setting prevents the soiling of the surfaces
- no disturbing visible films on the covering
- good watertightness under heavy rain because of a high ability of penetration
- reliable protection against moisture because of a high efficiency
- very good sealing features

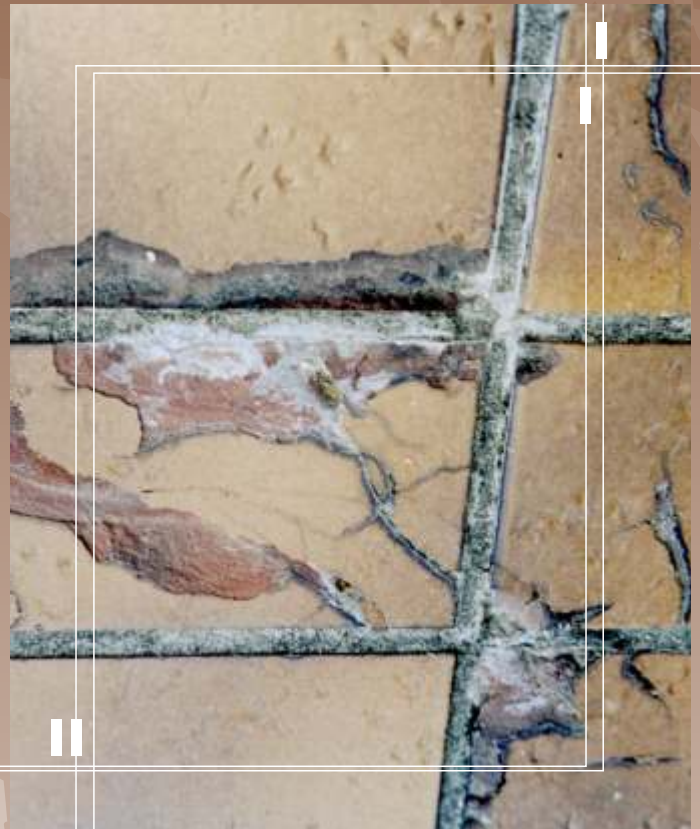
**Sealing:** in case of non watertight covering surfaces, there is a high slip and creep capability at porous, thinly cracked, and non watertight joints.

**Preventive:** on new coverings as a preventive measure against leaking and cracking (should be renewed after a couple of years).

**Efflorescences:** prevents efflorescences (white spots) on the covering surface.

**Moos:** reduces the formation of moss

**Maintenance:** Special preservative agents contained in it allow an easy cleaning. Dirt and dust stick less to the covering.



### KEEPING THE VALUE

In the long run, sun, dampness and frost can unstoppable destroy unprotected slabstone pavings and their joints.

Moisture can penetrate the surface in an unprotected way. High outside temperatures or a direct solar radiation cause the production/pressure of steam under the slabstone paving. The consequences are spalling, cracking in the covering, thin cracking in the joint material, sanding and chipping off of the joints. In winter, this work of destruction will be completed by the frost.

'epasan FP-Dichter Balkon' is a transparent and very slurry sealant.

Because of its high slip and creep capability we obtain a very high penetration depth at porous and non watertight joints and cracks in the covering itself.

## FURTHER FIELDS OF APPLICATION:

Sealing of terraces  
Sealing of garage floors  
Sealing of outdoor tiles  
Sealing of pile walls with brick facing  
Sealing of advanced mantles  
Sealing of wet rooms  
Tiled floors in frequently used areas  
(restaurants ...)

## IT PROTECTS

concrete walls from soiling  
from the formation of moss and spores  
window sills and winter gardens  
monuments, statues from soiling etc.  
workshop floors and squares (de-icing salt)

## ADVANTAGES

the handling is easy - also for laymen  
the material prevents the formation of moss  
and spores unlimited storage life the material  
can be processed also in winter

## A COMPLETE REHABILITATION IS EXPENSIVE

Just exchange the damaged slabs.  
Then protect the whole surface with  
'**epasan FP-Dichter Balkon**'.

## INSTRUCTIONS FOR THE PROCESSING OF 'epasan FP Dichter-Balkon'

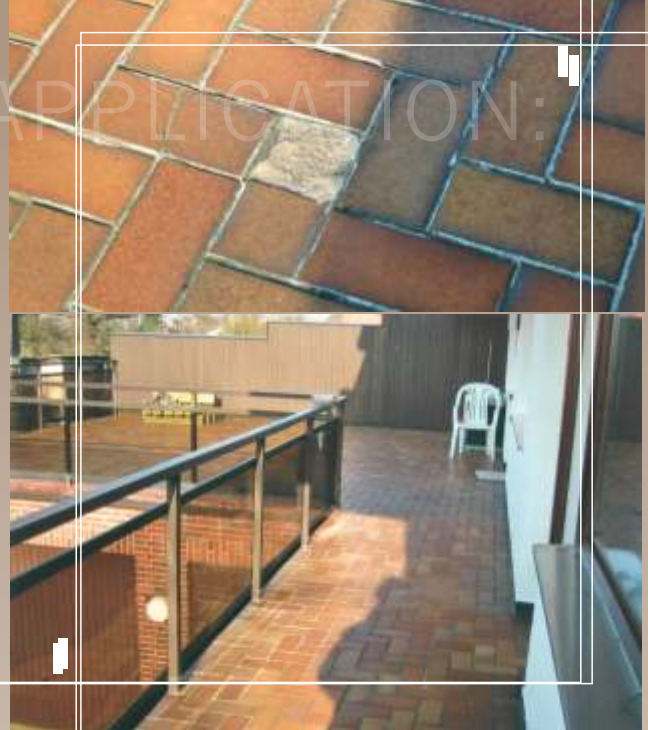
Pour '**epasan FP Dichter-Balkon**' on the surface.

Distribute '**epasan FP Dichter-Balkon**' evenly over  
the whole surface by using a roll or a sponge.  
Make sure that the joints absorb enough.  
Apply it as a thin layer (avoid puddles).

'**epasan FP-Dichter Balkon**' is transparent, water-repellent,  
but allows water vapour diffusion. The moisture contained  
under the slabstone paving can escape to the surface.  
No water can penetrate anymore from above.

'**epasan FP-Dichter Balkon**' slightly intensifies  
the coloration of dull coverings. After it has set  
wipe it dry and a silky shine will appear.

The various possibilities of application and  
consumption rates of material are based on experiences  
and are approximations. Carry out a trial test  
before application.



**Cut out the joints already chipped off or loose.  
Then remove the dust. Capillary cracks can  
be neglected.  
Also open larger cracks and clean them.**

### Repair of the joints:

1. Damp the joint.
2. Mix the pointing mortar with water.
3. Tightly trowel off the joint and level it with  
a damp sponge. Let the mortar cure in the joint.

## EXCHANGE THE DAMAGED SLAB/TILE

Cut open the joint circularly around the slab/tile by using  
a cutoff wheel. Knock out the slab/tile,  
replace it with a new one and point it.

After rain or wet cleaning wait approx. two or three days  
before treating the floor with '**epasan FP-Dichter Balkon**'.  
Use gloves.

Polish '**epasan FP-Dichter Balkon**' after the setting  
(redressing is necessary only on dark, glazed  
surfaces, which are caused by the preservative agent  
used). Redressing is not necessary on mat, bright, beige  
or grey coverings.

Polish either with a soft cloth or, in case of very large  
surfaces, use a floor polishing machine. The curing time  
is about three hours. The treated surface then can  
immediately be weighed and exposed to moisture.

**Delivered drums: canister of 2.5 litres - sufficient for  
approx. 16-20 qm!**

epasan ist eine Innovation aus dem Hause epasit

